

KD series



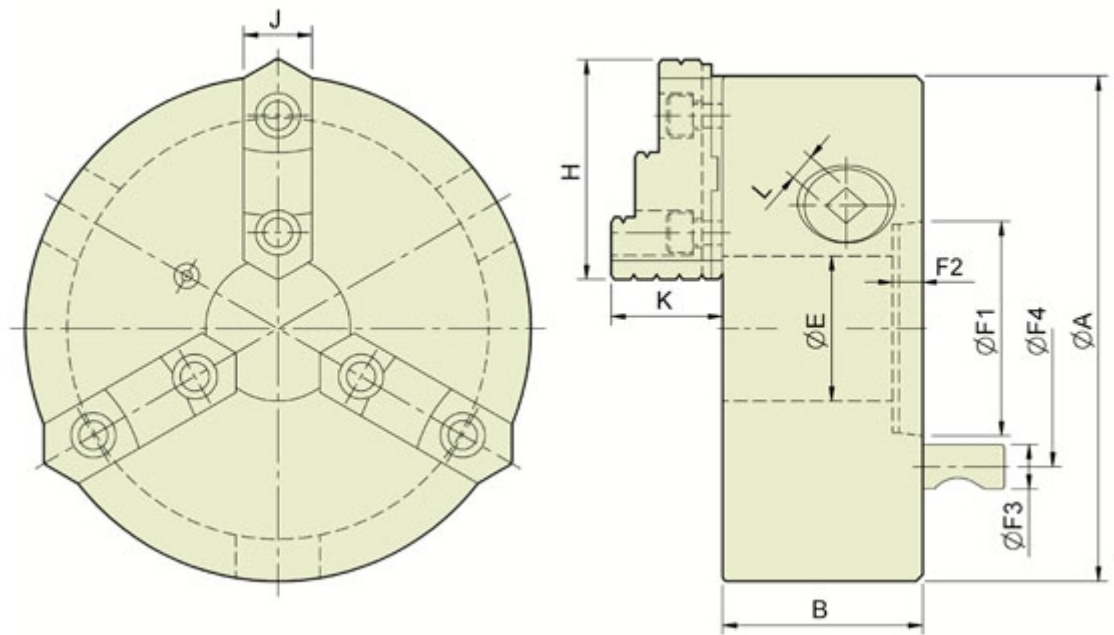
SPECIFICATIONS:

3-JAW STRONG SCROLL CHUCKS D1 CAMLOCK DIRECT MOUNTING, 2-PIECE JAWS

(ASA spindle nose D1-4, D1-5, D1-6, D1-8)

American standard camlock type with 2-piece reversible hard top jaws.

1. Gripping accuracy of 0.03mm(0.0012 inch) T.I.R.
2. Standard accessories A chuck wrench and hex. key. One set of mounting bolts. (UNC-bolts)
3. The body is made of MEEHANITE. It is suitably used for high speed revolution and 3 times more durable than regular chucks.



SPECIFICATIONS:

Dim Model	Spindle Size	A	B	E	L	H	J	K	Mounting Dimensions				Allowable Handle Torque (kgf. m)	Gripping Force (kgf)	Moment of Inertia I (kg. m ²)	Weight (kg)	Max. Speed (r.p.m.)	Gripping Rang	
									F1	F2	F3	F4						O.D. range	I. D. range
KD4-6"	D1-4	165	72	46	10	72	26	39	63.5	13	15.8	82.55	9.0	3300	0.04	11	4000	Ø8-Ø160	Ø55-Ø150
KD4-8"	D1-4	200	77.2	53	11	82	28	42.2	63.5	13	15.8	82.55	11.5	3600	0.07	18	3200	Ø8-Ø180	Ø62-Ø170
KD5-8"	D1-5	200	77.2	55	11	82	28	42.2	82.563	16	19	104.78	11.5	3600	0.07	18	3200	Ø8-Ø180	Ø62-Ø170
KD6-8"	D1-6	200	77.2	58	11	82	28	42.2	106.375	17	22.2	133.35	11.5	3600	0.07	17	3200	Ø8-Ø180	Ø62-Ø170
KD6-10"	D1-6	250	86	76	12	90.9	32	50.8	106.375	17	22.2	133.35	19.5	4800	0.2	29.5	2500	Ø11-Ø220	Ø70-Ø210
KD6-12"	D1-6	306	107.5	103	14	114.5	40	57.8	106.375	13.5	22.2	133.35	21.0	5100	0.5	47	2200	Ø15-Ø300	Ø90-Ø290
KD8-10"	D1-8	250	86	80	12	90.9	32	50.8	139.719	19	25.4	171.45	19.5	4800	0.2	27	2500	Ø11-Ø220	Ø70-Ø210
KD8-12"	D1-8	306	107.5	103	14	114.5	40	57.8	139.719	18	25.4	171.45	21.0	5100	0.5	47	2200	Ø15-Ø300	Ø90-Ø290